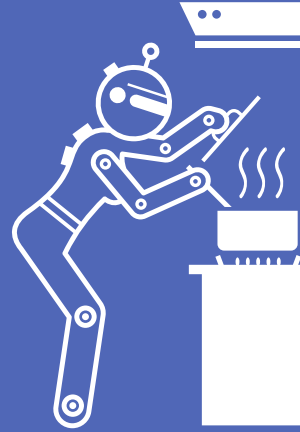


# Bites & Bytes



Branch Conference | Food Sustainability & AI  
19 September 2024 | 9:00-15:00 | Eastwood Park, GL12 8DA

Join us for our latest branch conference as we delve into the world of sustainable food choices and how the developing world of AI can be implemented & aid decision making in the future.

Our guest speakers:



## Tim Radcliffe

Tim Radcliffe is the Net Zero Food Programme Manager at NHS England, and before that was the Facilities Manager at East Lancashire Hospitals. Tim has worked in the NHS for nine years; prior to that, working in the private sector, mainly in hotels and restaurants.



## Shabnam Shehan

Shabnam Shehan is the Estates, Facilities and Capital Development Systems Manager at the University Hospital of Southampton. She is the administrator for the CAFM database system Planet Enterprise used by UHS Estates and is responsible for the issuing of Planet reports through the SSRS, SQL and Excel.



## Carl-Magnus von Behr

Carl-Magnus von Behr is a PhD researcher at the University of Cambridge and the Director of innex.ai Ltd. His research and professional work focuses on enhancing knowledge sharing and operational efficiencies for NHS EFM staff. Along with his team, Carl is pioneering an innovative AI platform designed to streamline access to and dissemination of critical guidance, while also improving collaboration throughout the NHS.

Contact Eastwood Park Training or scan the QR code to book your place:

[training@eastwoodpark.co.uk](mailto:training@eastwoodpark.co.uk) | 01454 262777

## Agenda for the day

- 9:00 Refreshments and networking
- 9:30 HEFMA Introduction with George Atkinson
- 9:40 NHSE National update with Kay Mulcahy
- 10:00 HEFMA National Council Update
- 10:15 IHEEM update with Alison Ryan
- 10:45 Break
- 11:05 Timothy Radcliffe, NHS England Catering - low carbon food choice, electronic ordering , children meals, future of food
- 12:30 Lunch
- 13:30 Guest Speakers | AI in estates and facilities management with Shabnam Shehan & Carl-Magnus von Behr
- 15:00 Close

### Finding us

This event will be held at Eastwood Park Country House. When approaching the driveway, please keep right, following signs for the Country House. Please park in the long stay car park.



Eastwood Park,  
Wotton-under-edge,  
Gloucestershire, GL128DA



Contact Eastwood Park Training or scan the QR code here to book your place: